

# PRO POOL LIFT: 4 –POINT ANCHOR INSTALLATION

**NOTE: THE PRO POOL LIFT ANCHOR CAN BE INSTALLED IN EITHER A NEW POOL DECK OR AN EXISTING DECK.**

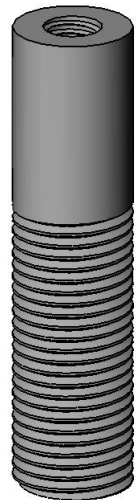
## **RETRO-FIT INSTALLATION / EXISTING DECK APPLICATION**

### **TOOLS REQUIRED:**

MARKING PEN/PENCIL  
1 1/4" CORE DRILL BIT  
CORE DRILL  
HAMMER

LEVEL  
HIGH STRENGTH EPOXY  
TAPE MEASURE  
CHISEL

1. Locate the anchor jig and the FOUR (4) anchor bolts. **FIGURE 1**
2. Using the anchor jig plate smaller holes as a template, mark the FOUR (4) hole locations on the deck. The front anchor must be no more than 14 inches [356mm] from the pool wall. **FIGURE 3.** Make sure to keep the two rear anchor holes parallel to the pool wall.
3. Remove the 1" hex nuts from the anchor bolts. Core Drill a 1-1/4" [32mm] diameter hole at the FOUR (4) locations marked from step 1. Drill to a depth of 4" to 5" [10cm to 13cm].
4. Remove the core from the hole with a chisel and hammer if necessary. Clean out all four holes completely.
5. Fill each hole approximately 1/2 full with high strength epoxy.
6. Ground at least one anchor bolt to an existing bonding grid or appropriate ground source per local codes.
7. Install the FOUR (4) anchor bolts into the epoxy filled holes. Make sure that the top of the bolts will be flush with the top of the pool deck. (NOTE: To make positioning of the anchors easier the 1/2" bolts may be temporarily installed in the anchors to give you something to hold onto.)
8. Let epoxy cure as per the manufacturer's instructions before installing the PRO POOL LIFT™.



**FIGURE 1  
(ANCHOR BOLT,  
HEX NUTS  
REMOVED)**

## **NEW CONSTRUCTION: ANCHOR INSTALLATION**

When the lift is installed on a new deck, the slab should be a minimum of 6" [15cm] thick at the lift location, and should be reinforced with #4 reinforcing bar at 10" [25.4cm] on center in each direction. The total pad area should be 3 feet [92cm] wide (from the edge of the pool back) by 3 feet [92cm] long.

1. Locate the preset anchor jig assembly and the four (4) anchor bolts. Mount the anchor bolts to the jig plate as shown in **FIGURE 2.**
2. Ground the jig plate using the attached bronze grounding lug. Check local codes for anchor grounding.
3. Locate the jig assembly at the desired pool location. The front anchor (centerline) must be no more than 14" [35.6cm] from the pool wall as shown in **FIGURE 3.** Make sure to keep the front two anchor holes parallel to the pool wall.
4. Make sure the anchor assembly is plumb and level – secure the anchors, and then pour the deck.

